



September Coffee

July 15, 2010

170.20 -
170.00 -
169.80 -
169.60 -
169.40 -PFV *
169.20 -
169.00 -
168.80 -F
168.60 -V *****
168.40 -
168.20 -V *
168.00 -
167.80 -F
167.60 -V *****
167.40 -A
167.20 -PP
167.00 -P
166.80 -F
166.60 -P
166.40 -S
166.20 -MM
166.00 -MM
165.80 -M
165.60 -
165.40 -
165.20 -F PREV.CLOSE
165.00 -F 164.90
164.80 -MS
164.60 -MM
164.40 -
164.20 -MM
164.00 -PPM
163.80 -MSS
163.60 -FM
163.40 -
163.20 -V *
163.00 -
162.80 -SV *****
162.60 -F
162.40 -
162.20 -AV *
162.00 -
161.80 -FMMV *****
161.60 -
161.40 -
161.20 -FM
161.00 -
160.80 -
160.60 -M
160.40 -
160.20 -P
160.00 -
159.80 -

Helms

The market is attempting secondary rallies against the recent bear turnover. Be prepared for further rally attempts to test 169* resistance. A close over 169* is bullish and should spark rallies to challenge into the late June spike. A rejection from 169* calls for a near term drop off to sideways congestion along the low 160's. A close under 159 will renew topping selloffs.

Priority

1* The downside objectives for this formation range from 158.80 to 151.00 with a close over 165.85 needed to negate a bear trading stance.

2* Market is within proximity of this week's projected resistance range of 173.50-166.18, which may provide a likely zone for topping action or setbacks.

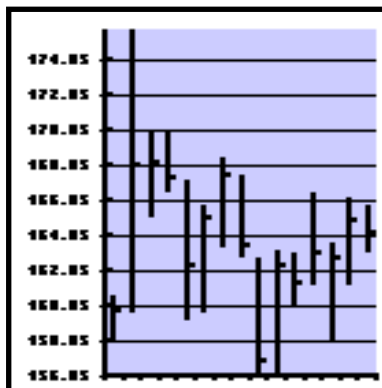
Scalper High: 166.30
Scalper Low: 163.75
Fib Point Above: 166.73
Fib Point Below: 163.57
Range Reversal: 6.26
Range Key: 4.83
Swing Point: 163.68

ST Trend: Sdwys
Obj: None
TRP: 169.00

Daily
Supprt: 162.69 - 161.72
Resist: 167.52 - 168.54

Prev High: 166.55
Prev Low: 164.00

Weekly
Supprt: 161.12 - 155.73
Resist: 166.18 - 173.50



ST Swing Pattern

Swing pattern shows a slightly negative bias for today and a 64% chance of taking out yesterday's low the next two sessions.



P3d - 3-Day Micro-Pattern

Range	Odds	Target	Closing	Odds
Rally:	46%	167.26	Higher:	48%
Break:	57%	162.57	Lower:	51%